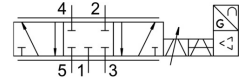


# Proportional directional control valve MPYE-5-1/8-LF-010-B

FESTO

Part number: 151692



## Data sheet

Feature	Value
Nominal width	4 mm
Type code	MPYE
Actuation type	Electrical
Sealing principle	Hard
Mounting position	Any
Structural design	Piston gate valve
Reset method	Magnetic spring
Safety instructions	MPYE safety position: if the power supply cable breaks, the blocked mid-position is approached.
Type of control	Direct
Flow direction	Non-reversible
Symbol	00995308
Valve function	5/3, closed
Reverse polarity protection	for all electrical connections
Operating pressure	0 MPa ... 1 MPa
Operating pressure	0 bar ... 10 bar
b-value	0.12
C value	1.65 l/sbar
Standard nominal flow rate	350 l/min
Cut-off frequency	95 Hz
Max. hysteresis	0.4 %
DC operating voltage range	17 V ... 30 V
Residual ripple	5 %
Setpoint/actual values	Voltage type 0 - 10 V
Certification	RCM compliance mark
KC characters	KC EMC
CE marking (see declaration of conformity)	As per EU EMC directive
Operating medium	Compressed air as per ISO 8573-1:2010 [6:4:4]
Information on operating and pilot media	Operation with oil lubrication not possible
Corrosion resistance class (CRC)	2 - Moderate corrosion stress
LABS conformity	VDMA24364-B2-L
Temperature of medium	5 °C ... 40 °C
Degree of protection	IP65
Ambient temperature	0 °C ... 50 °C
Product weight	285 g

<b>Feature</b>	<b>Value</b>
Electrical connection	4-pin M12x1 Plug Round design
Type of mounting	With through-hole
Pneumatic connection 1	G1/8
Pneumatic connection 2	G1/8
Pneumatic connection 3	G1/8
Pneumatic connection 4	G1/8
Pneumatic connection 5	G1/8
Note on materials	RoHS-compliant
Cover material	ABS Coated
Seals material	NBR
Housing material	Aluminum Anodized